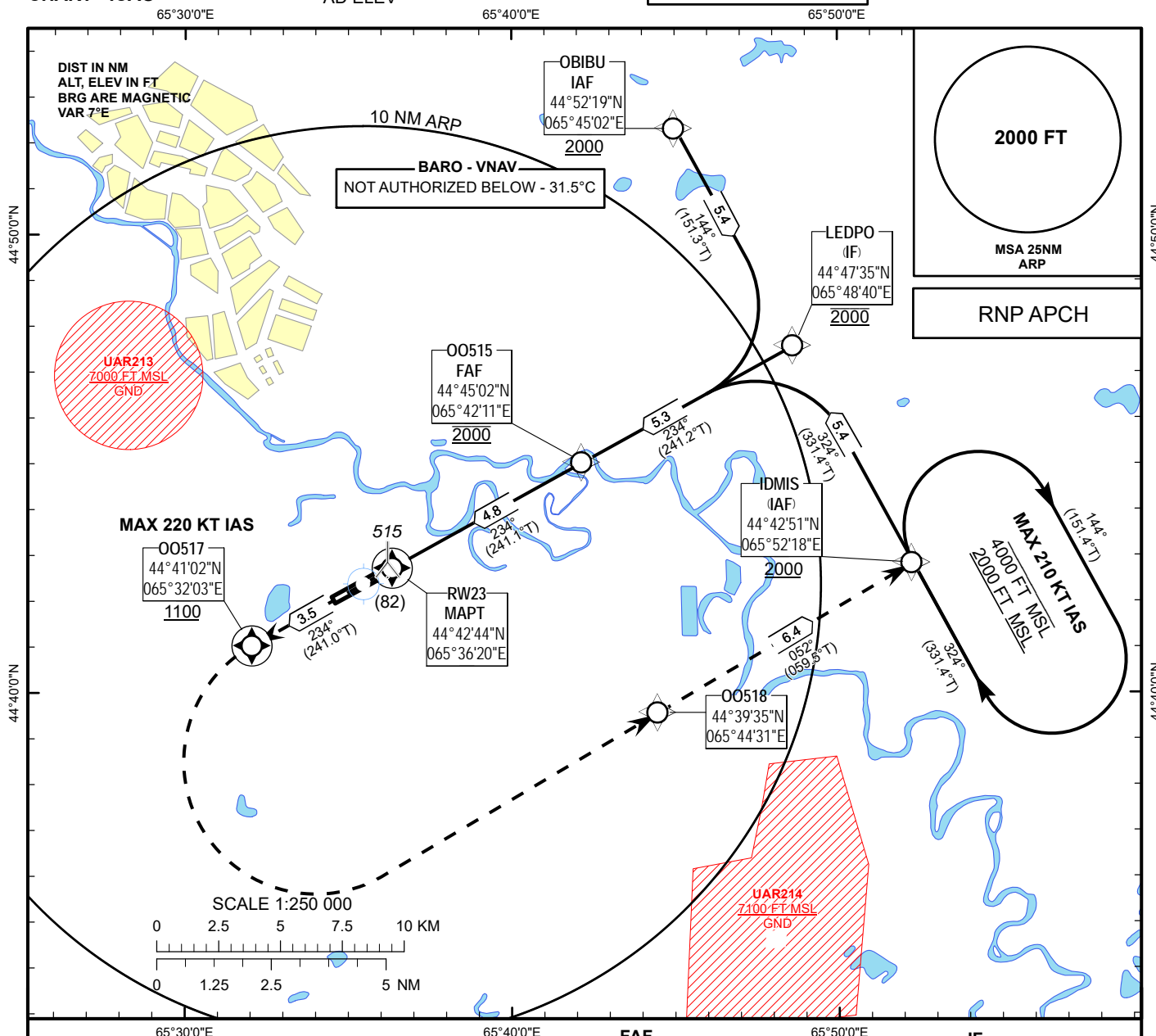


INSTRUMENT
APPROACH
CHART - ICAO

AERODROME ELEV **433FT**
HEIGHTS RELATED TO
AD ELEV

KYZYLORDA TOWER 120.9
KYZYLORDA ATIS (EN) 134.9
KYZYLORDA ATIS (RU) 122.9

KYZYLORDA
RNP RWY 23



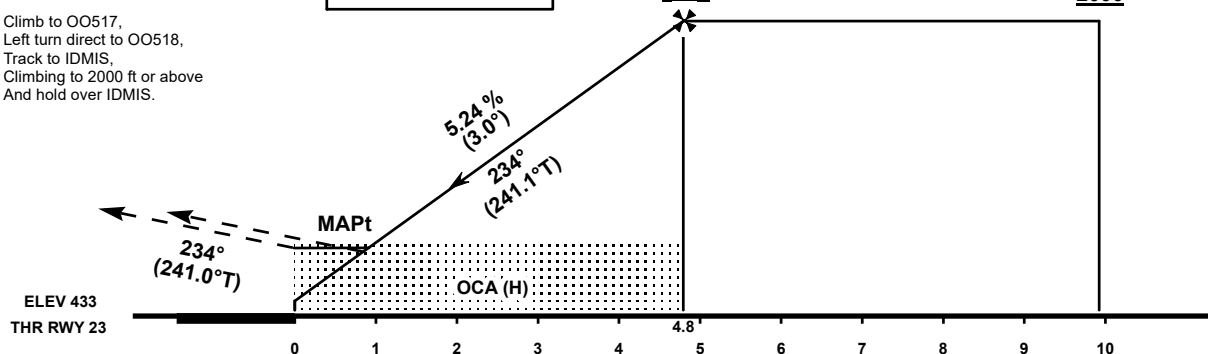
MISSED APPROACH:

Climb to 00517,
Left turn direct to 00518,
Track to IDMIS,
Climbing to 2000 ft or above
And hold over IDMIS.

TRANSITION ALT 10000 FT

FAF
00515
2000

IF
LEDPO
2000



OCA(OCH)		A	B	C	D
Straight	LNAV	770(340)			
	LNAV/VNAV	650(218)	660(228)	670(238)	680(248)

DIST THR	4	3	2	1
ALTITUDE	1760	1440	1120	810
HEIGHT	1327	1007	687	377

GS	kt	80	100	120	140	160	180
Rate of descent	ft/min	420	530	640	740	850	950
FAF/FAP - THR (4.8 NM)	min:s	3:35	2:52	2:23	2:03	1:47	1:35

CHANGE: Editorial.

TABULAR DESCRIPTION

RNP RWY23											
Serial Number	Path Descriptor	Waypoint Identifier	Fly - over	Course °M(°T)	Magnetic Variation(°)	Distance (NM)	Turn Direction	Altitude (FT)	Speed (KT)	VPA (°)	Navigation Specification
010	IF	IDMIS	-	-	+7.5	-	-	+2000	-	-	RNP APCH
020	TF	LEDPO	-	324(331.4)	+7.5	5.4	-	@2000	-	-	RNP APCH
010	IF	OBIBU	-	-	+7.5	-	-	+2000	-	-	RNP APCH
020	TF	LEDPO	-	144(151.3)	+7.5	5.4	-	@2000	-	-	RNP APCH
010	IF	LEDPO	-	-	+7.5	-	-	@2000	-	-	RNP APCH
020	TF	OO515	-	234(241.2)	+7.5	5.3	-	@2000	-	-	RNP APCH
030	TF	RW23	Y	234(241.1)	+7.5	4.8	-	@483	-	-3	RNP APCH
040	CF	OO517	Y	234(241.0)	+7.5	3.5	-	+1100	-220	+1.4	RNP APCH
050	DF	OO518	-	-	+7.5	-	L	-	-	+1.4	RNP APCH
060	TF	IDMIS	-	052(059.5)	+7.5	6.4	-	+2000	-	+1.4	RNP APCH
070	HM	IDMIS	-	324(331.4)	+7.5	5.0	R	+2000/-4000	-210	-	RNP APCH

WAYPOINT COORDINATES

RNP RWY23		
Waypoint Identifier	Coordinates	
IDMIS	444250.70N	0655217.80E
LEDPO	444734.94N	0654839.98E
OBIBU	445219.10N	0654501.50E
OO515	444502.28N	0654211.42E
RW23	444243.85N	0653620.40E
OO517	444102.01N	0653202.96E
OO518	443934.82N	0654430.72E